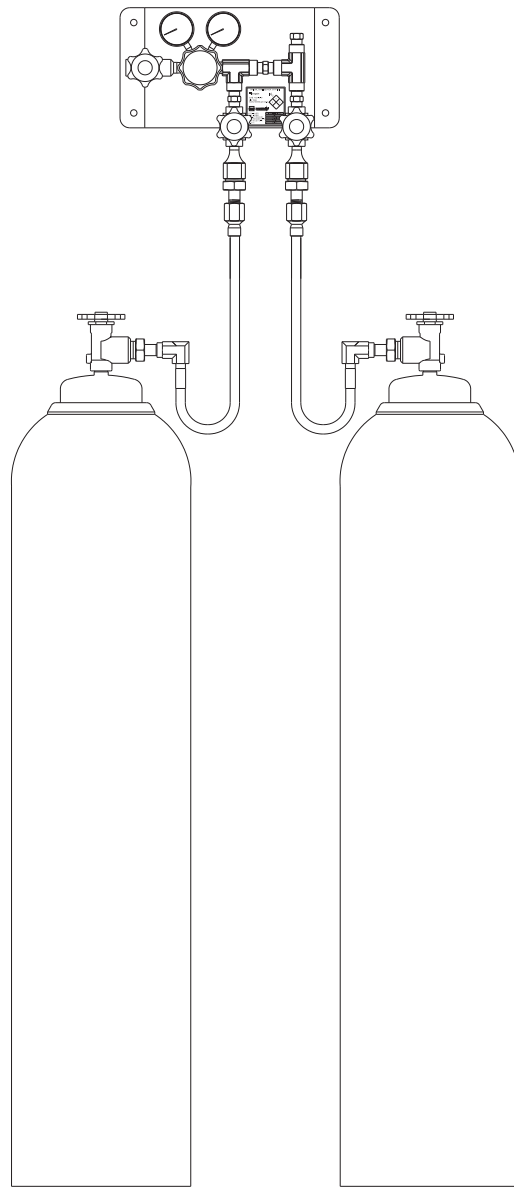


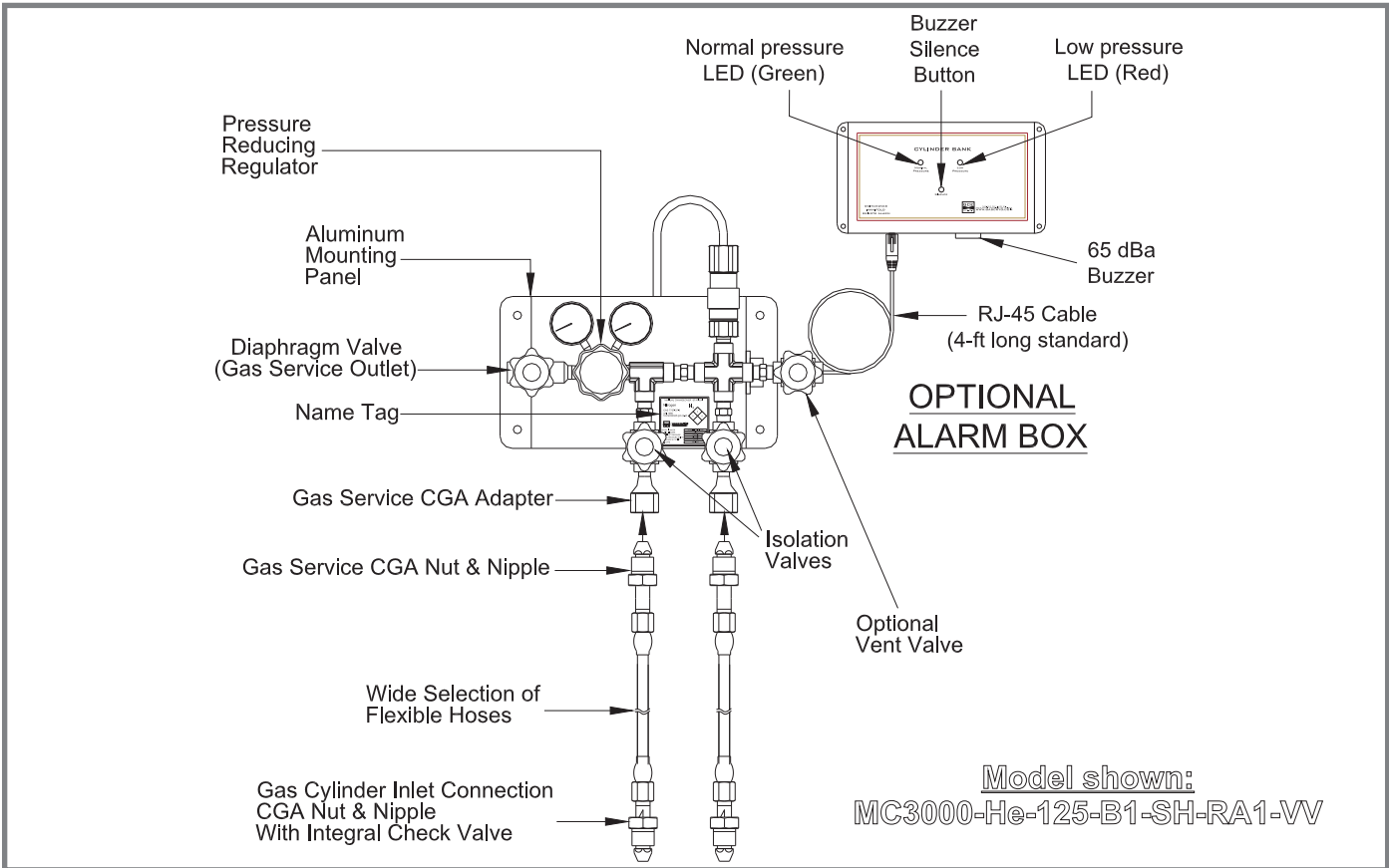
EQUIPMENT CATALOG

Manual Changeover Station For 3000 psig Cylinders



*Helping our customers
to become more effective*





DESCRIPTION

The MC3000 Series Manual Changeover Stations allow manual switching between a primary cylinder and a reserve cylinder. By closing the depleted cylinders isolation valve and opening the reserve (full) isolation valve, you perform cylinder changeouts without gas supply interruption. The check valves in the flexible hoses prevent back flow from the full to the empty cylinder. The optional remote alarm will provide an audible and visual warning when a cylinder is near depletion.

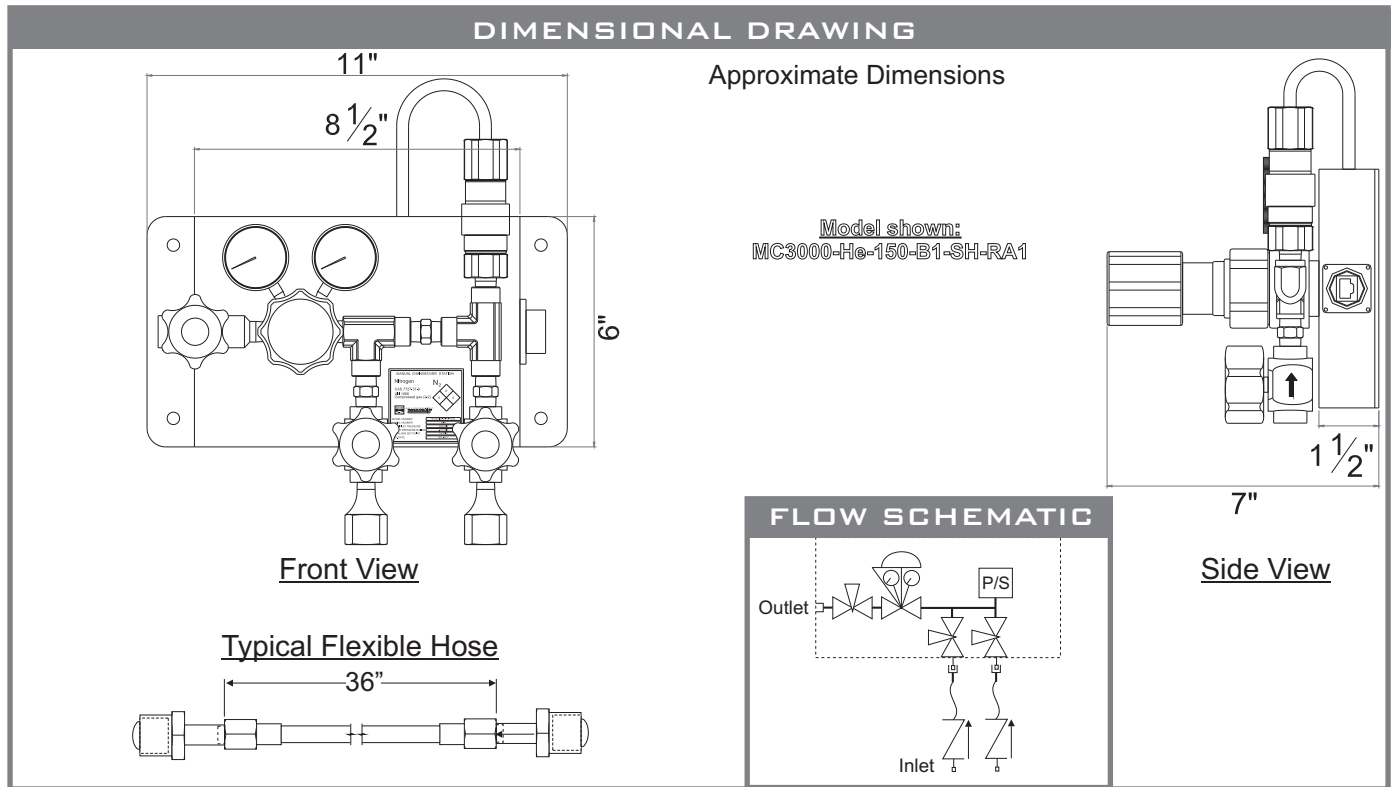
STANDARD FEATURES

- High purity** - Equipment components are designed, cleaned, and built to maintain gas purity
- Wide selection of regulators and hoses** - Customized equipment to suit any application
- Mounting panel** - Professional look, easy Installation
- Integral check valve in the flexible hoses** - Prevents gas from cascading to the empty cylinder during cylinder changeouts
- Optional remote alarm** - Provides an audible and visual indication when a cylinder is depleted

HOW TO ORDER - PART NUMBER MATRIX

MC3000					
Series (inlet pressure)	Fluid	Outlet Pressure	Regulator	Flexible Hoses	Options
Standard Series	<input type="checkbox"/> Air = Air	Standard Ranges (in psig)	<input type="checkbox"/> Brass / Single-Stage = B1 (Standard Regulator)	<input type="checkbox"/> Thermoplastic (Nylon) Steel Fittings = NH	<input type="checkbox"/> Standard Alarm = RA1
<input type="checkbox"/> MC3000 = 3000 psi	<input type="checkbox"/> Nitrogen = N2	<input type="checkbox"/> 0-15 = 15	<input type="checkbox"/> Brass / Two-Stage = B2	<input type="checkbox"/> Teflon Innercore, SS Braid, Brass Fittings = TH	<input type="checkbox"/> Vent Valve = VV
	<input type="checkbox"/> Helium = He	<input type="checkbox"/> 0-50 = 50	<input type="checkbox"/> SS / Single-Stage = S1	<input type="checkbox"/> Stainless Steel Innercore, Overbraided & Fittings = SH	<input type="checkbox"/> Hose Armor Guard = AG
	<input type="checkbox"/> Hydrogen = H2	<input type="checkbox"/> 0-125 = 125	<input type="checkbox"/> SS / Two-Stage = S2		<input type="checkbox"/> Hand Tight Nut = HT
	Most Specialty Gases Can Be Specified Including Acetylene And Other LPG	<input type="checkbox"/> 0-250 = 250			
		<input type="checkbox"/> 0-500 = 500			
		Other: Please Specify			

WHEN STAINLESS STEEL REGULATORS ARE SELECTED, ALL FITTINGS, GAUGES AND PRESSURE SWITCHES ARE AUTOMATICALLY SUPPLIED IN STAINLESS STEEL



STANDARD SPECIFICATIONS AND MATERIALS OF CONSTRUCTION

Model	MC3000 Series Brass construction	MC3000 Series All Stainless Steel Construction
Maximum inlet pressure	3000 psig	3000 psig
Outlet pressure range	See part number matrix	See part number matrix
Inlet connection fitting	Gas related brass CGA nut & nipple	Gas related type 316 stainless steel CGA nut & nipple
Gas service outlet connection	1/4" F.NPT	1/4" F.NPT
Vent valve outlet connection	1/4" M.NPT	1/4" M.NPT
Operating temperature	-40°F to 140°F	-40°F to 140°F
Pressure gauge dial & material	2"-dial, brass	2"-dial, type 316 stainless steel
Fitting size & material	1/4" NPS, brass	1/4" NPS, type 316 stainless steel
Pressure regulator		
Body	Brass bar stock	Type 304 stainless steel bar stock
Diaphragm	Type 304 stainless steel	Type 316L stainless steel
Filter	10-micron	40-micron
Seats	Nickel-plated sintered bronze	Type 316L stainless steel
Seals	Teflon & PCTFE	PCTFE
	Teflon	Teflon
Vent & isolation valves		
Body	Forged brass UNS 37700	Type 316 stainless steel
Seats	Nylon, Zytel 101 or Celanese 1000-1	PFA
Seals	Virgin Teflon	PFA